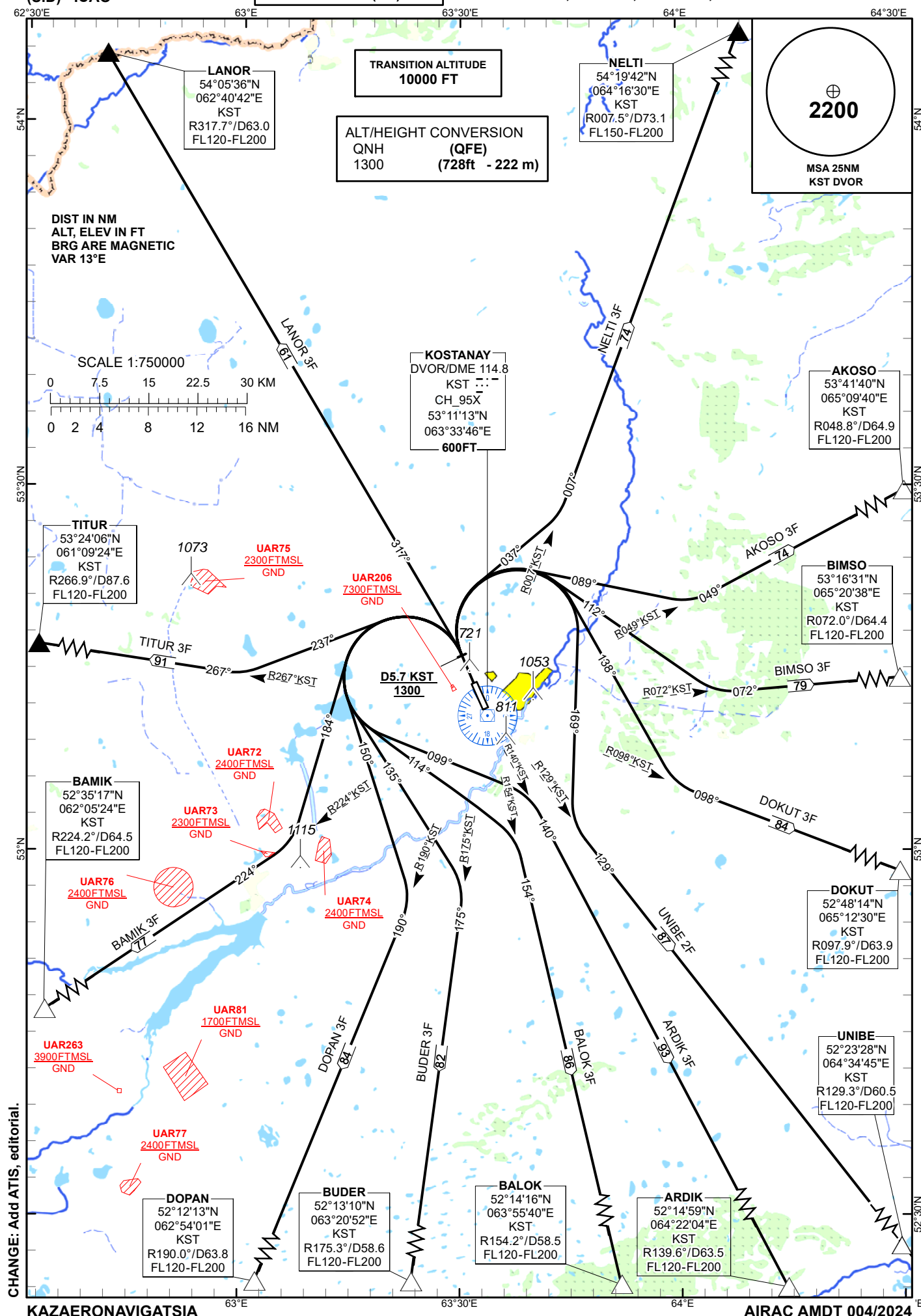


STANDARD DEPARTURE
CHART - INSTRUMENT
(SID) - ICAO

KOSTANAY TOWER 129.30
KOSTANAY ATIS (EN) 118.5
KOSTANAY ATIS (RU) 126.8

NELTI 3F, AKOSO 3F, BIMSO 3F, DOKUT 3F,
ARDIK 3F, BALOK 3F, BUDER 3F, DOPAN 3F,
BAMIK 3F, TITUR 3F, LANOR 3F, UNIBE 2F.

KOSTANAY
RWY 32



CHANGE: Add ATIS, editorial.

Standard Departure Routes - Instrument (SID) Kostanay RWY 32
NELTI 3F After take-off climb straight ahead to 1300FT or above. At 5.7NM KST, turn RIGHT on track 037° until intercept R007°KST, then proceed on track 007° to NELTI (R007.5° D73.1NM KST). Cross NELTI at FL150 – FL200.
AKOSO 3F After take-off climb straight ahead to 1300FT or above. At 5.7NM KST, turn RIGHT on track 089° until intercept R049°KST, then proceed on track 049° to AKOSO (R048.8° D64.9NM KST). Cross AKOSO at FL120 – FL200.
BIMSO 3F After take-off climb straight ahead to 1300FT or above. At 5.7NM KST, turn RIGHT on track 112° until intercept R072°KST, then proceed on track 072° to BIMSO (R072.0° D64.4NM KST). Cross BIMSO at FL120 – FL200.
DOKUT 3F After take-off climb straight ahead to 1300FT or above. At 5.7NM KST, turn RIGHT on track 138° until intercept R098°KST, then proceed on track 098° to DOKUT (R097.9° D63.9NM KST). Cross DOKUT at FL120 – FL200.
ARDIK 3F After take-off climb straight ahead to 1300FT or above. At 5.7NM KST, turn LEFT on track 099° until intercept R140°KST, then proceed on track 140° to ARDIK (R139.6° D63.5NM KST). Cross ARDIK at FL120 – FL200.
BALOK 3F After take-off climb straight ahead to 1300FT or above. At 5.7NM KST, turn LEFT on track 114° until intercept R154°KST, then proceed on track 154° to BALOK (R154.2° D58.5NM KST). Cross BALOK at FL120 – FL200.
BUDER 3F After take-off climb straight ahead to 1300FT or above. At 5.7NM KST, turn LEFT on track 135° until intercept R175°KST, then proceed on track 175° to BUDER (R175.3° D58.6NM KST). Cross BUDER at FL120 – FL200.
DOPAN 3F After take-off climb straight ahead to 1300FT or above. At 5.7NM KST, turn LEFT on track 150° until intercept R190°KST, then proceed on track 190° to DOPAN (R190.0° D63.8NM KST). Cross DOPAN at FL120 – FL200.
BAMIK 3F After take-off climb straight ahead to 1300FT or above. At 5.7NM KST, turn LEFT on track 184° until intercept R224°KST, then proceed on track 224° to BAMIK (R224.2° D64.5NM KST). Cross BAMIK at FL120 – FL200.
TITUR 3F After take-off climb straight ahead to 1300FT or above. At 5.7NM KST, turn LEFT on track 237° until intercept R267°KST, then proceed on track 267° to TITUR (R266.9° D87.6NM KST). Cross TITUR at FL120 – FL200.
LANOR 3F After take-off climb straight ahead to 1300FT or above. At 5.7NM KST, turn LEFT on track 317° to LANOR (R317.7° D63.0NM KST). Cross LANOR at FL120 – FL200.
UNIBE 2F After take-off climb straight ahead to 1300FT or above. At 5.7NM KST, turn RIGHT on track 169° until intercept R129°KST, then proceed on track 129° to UNIBE (R129.3° D60.5NM KST). Cross at FL120 – FL200.